

TROJAN UVMAX™

Lamp & Sleeve Replacement



This product is for indoor use only. Keep all components clean and dry.



Always shut-off water flow and release water pressure before servicing.



Electrical hazard. Be sure to unplug power supply. Keep all electrical connections dry and off the ground. Do not touch plug with wet hands.



Never look at the lamp when it is operating.



Read directions before servicing.

Sleeve cleaning

Minerals in the water slowly form a coating on the sleeve. This coating must be removed because it reduces the amount of UV light reaching the water, thereby reducing purification performance.

Basic models: please clean the sleeve regularly (3-4 times per year, or more often depending on water quality).

Plus models: the need to clean the sleeve will be indicated by a low UV alarm (see Owner's manual for details).

When only cleaning is required, follow instructions and re-install the current lamp.

Lamp replacement

The amount of UV light created by the lamp decreases over time, requiring that the lamp be replaced every 12 months. NOTE: The UV system is designed to operate continuously and should not be shut off for short periods of time, such as over a period of less than three weeks.

A, B, C, B4, C4 Models: Please keep track of your lamp's life. After 12 months follow these instructions to replace system with a new lamp.

D, E, F, D4, E4, F4 and Plus Models: The system will automatically notify you after 12 months to replace the lamp. Follow these instructions.

Equipment required:



Clean cotton, latex or plastic gloves are preferred.



Scale remover such as CLR™ or Lime-Away™.

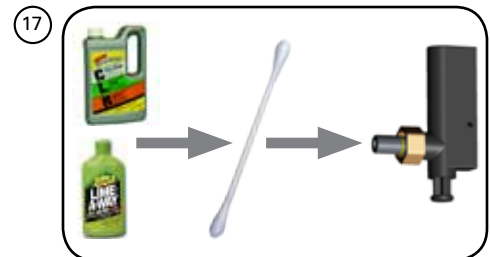
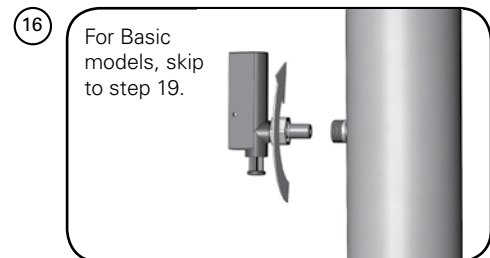
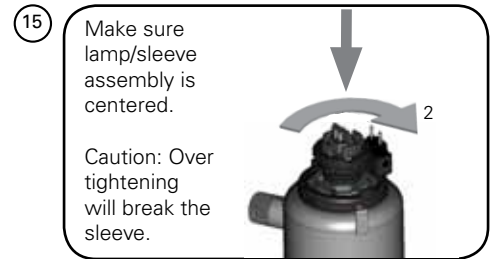
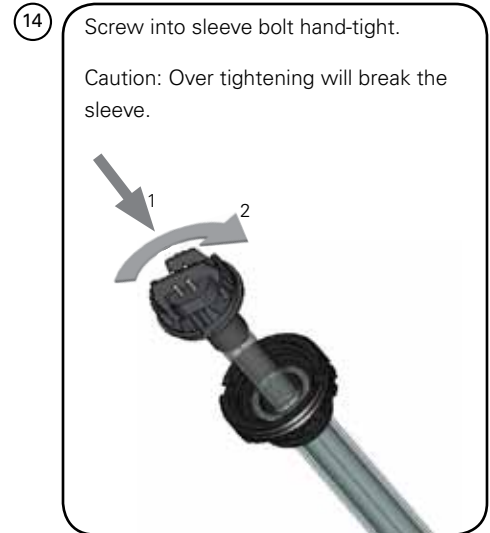
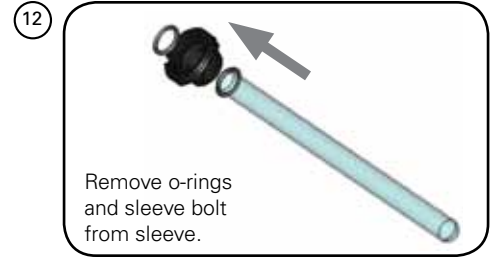
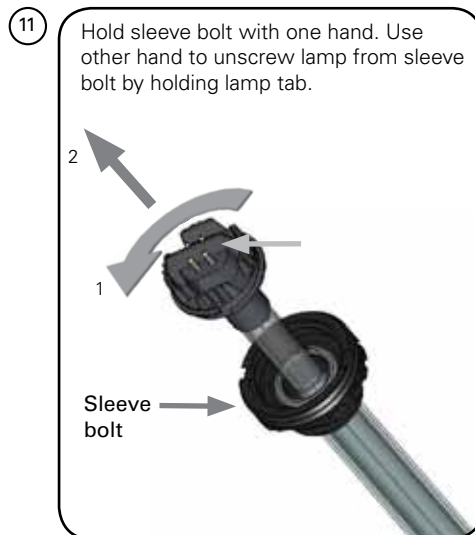
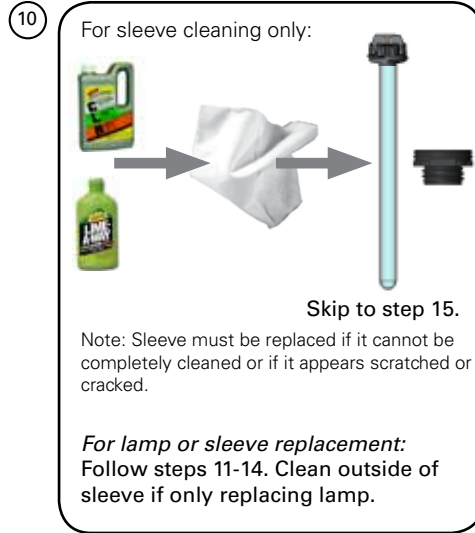
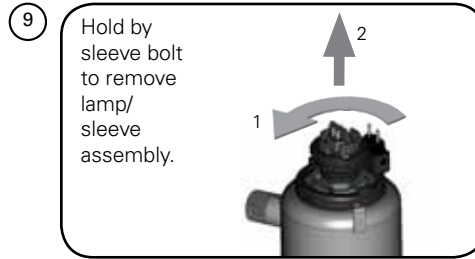
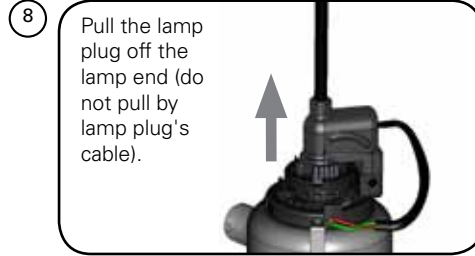
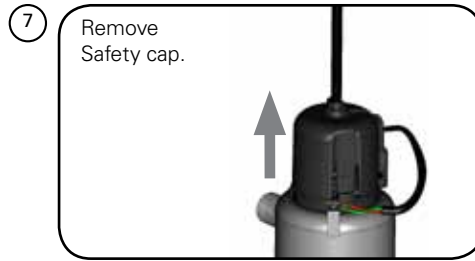
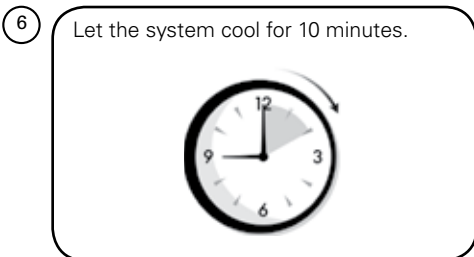
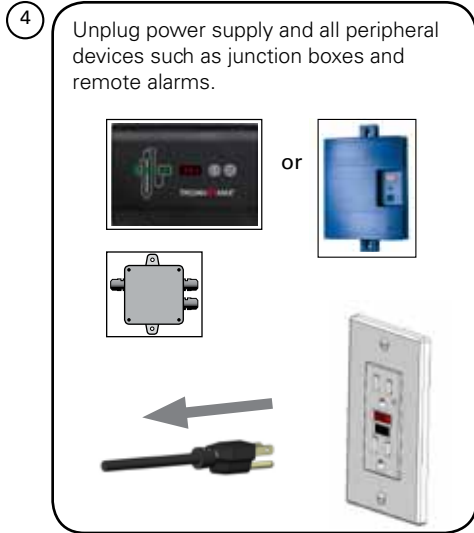
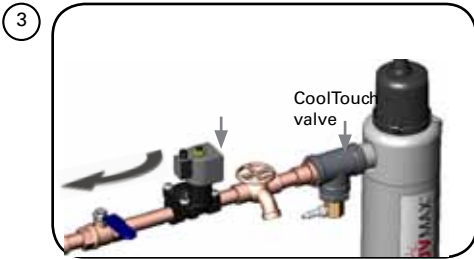
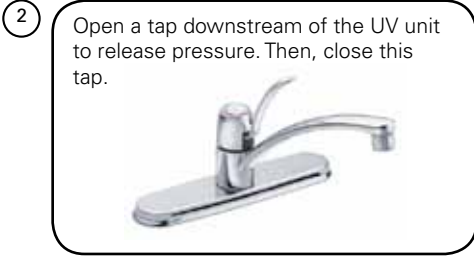
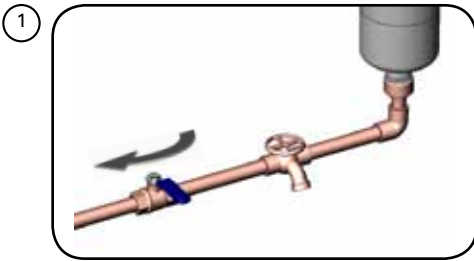


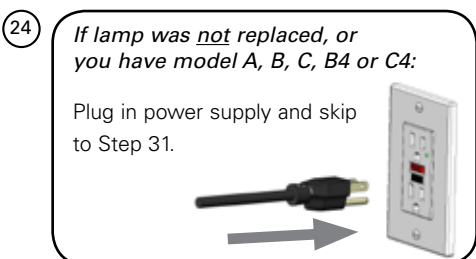
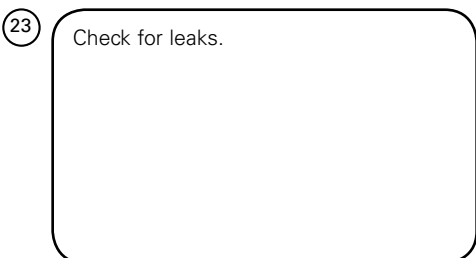
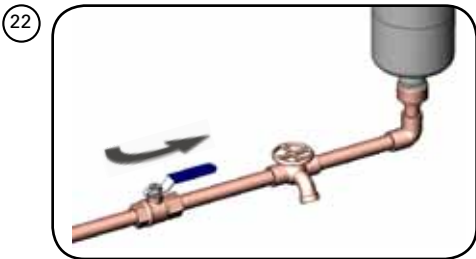
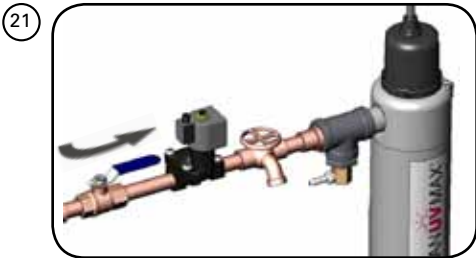
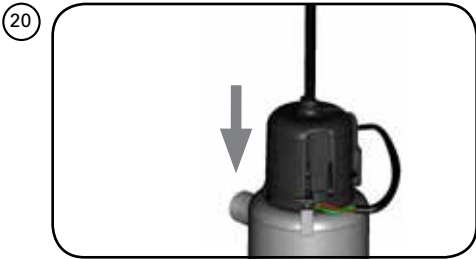
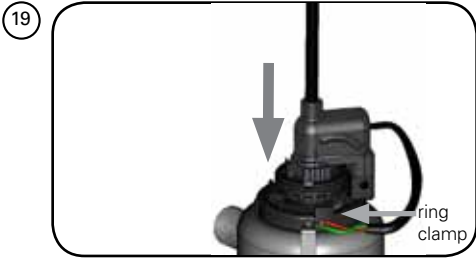
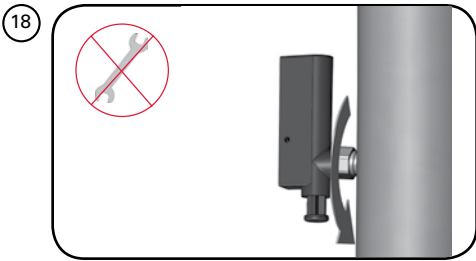
Cloth must be soft, lint-free, and chemical-free. No clean-wipes.



Cotton swab.

Note: System figures may look slightly different than your actual system.





25

If lamp was replaced:

Restart lamp timer. (D, E, F, D4, E4, F4 and Plus models only)

Follow steps 26 & 27 if you have a black power supply.

Follow steps 28 - 30 if you have a blue power supply.

